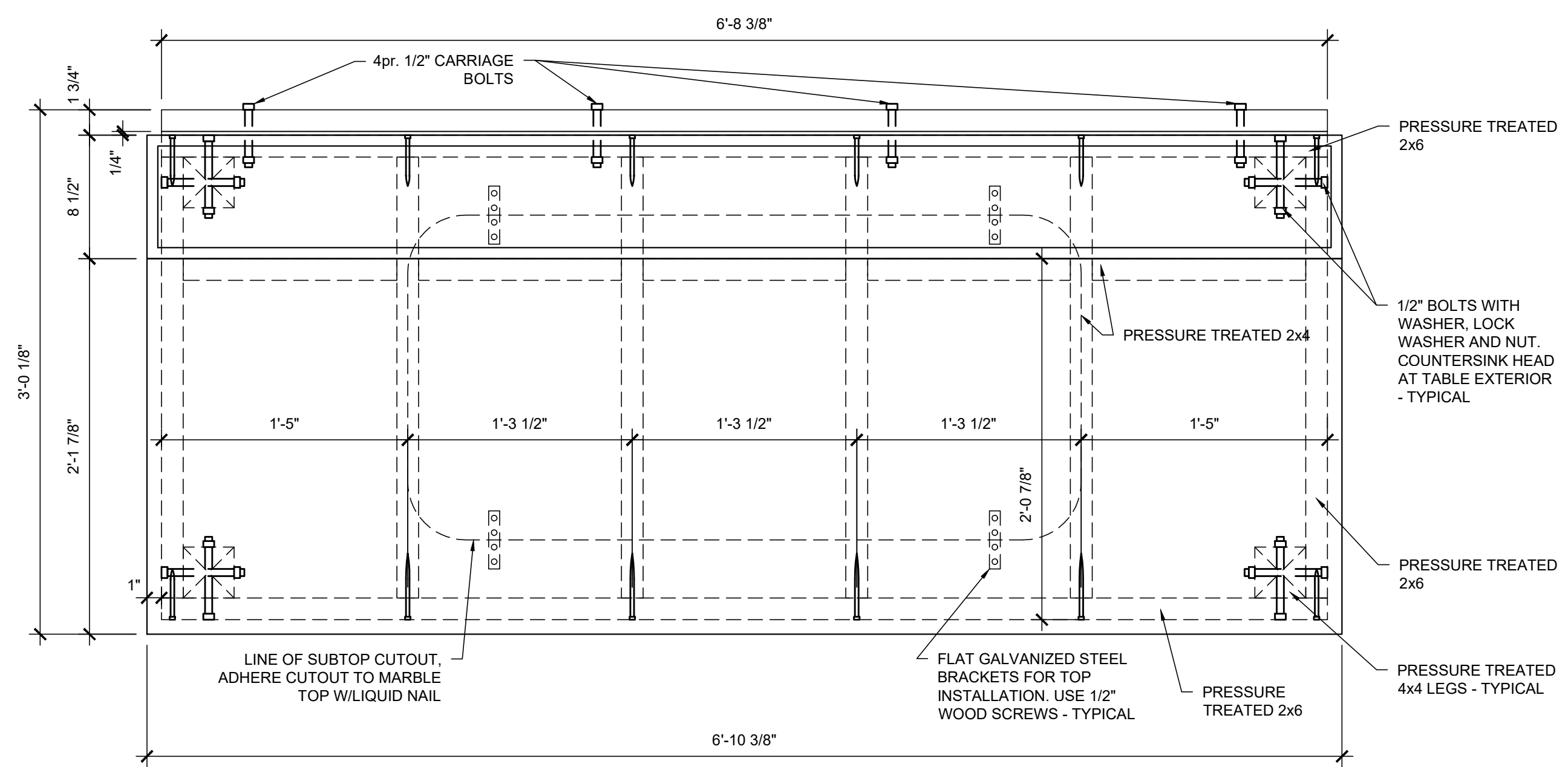
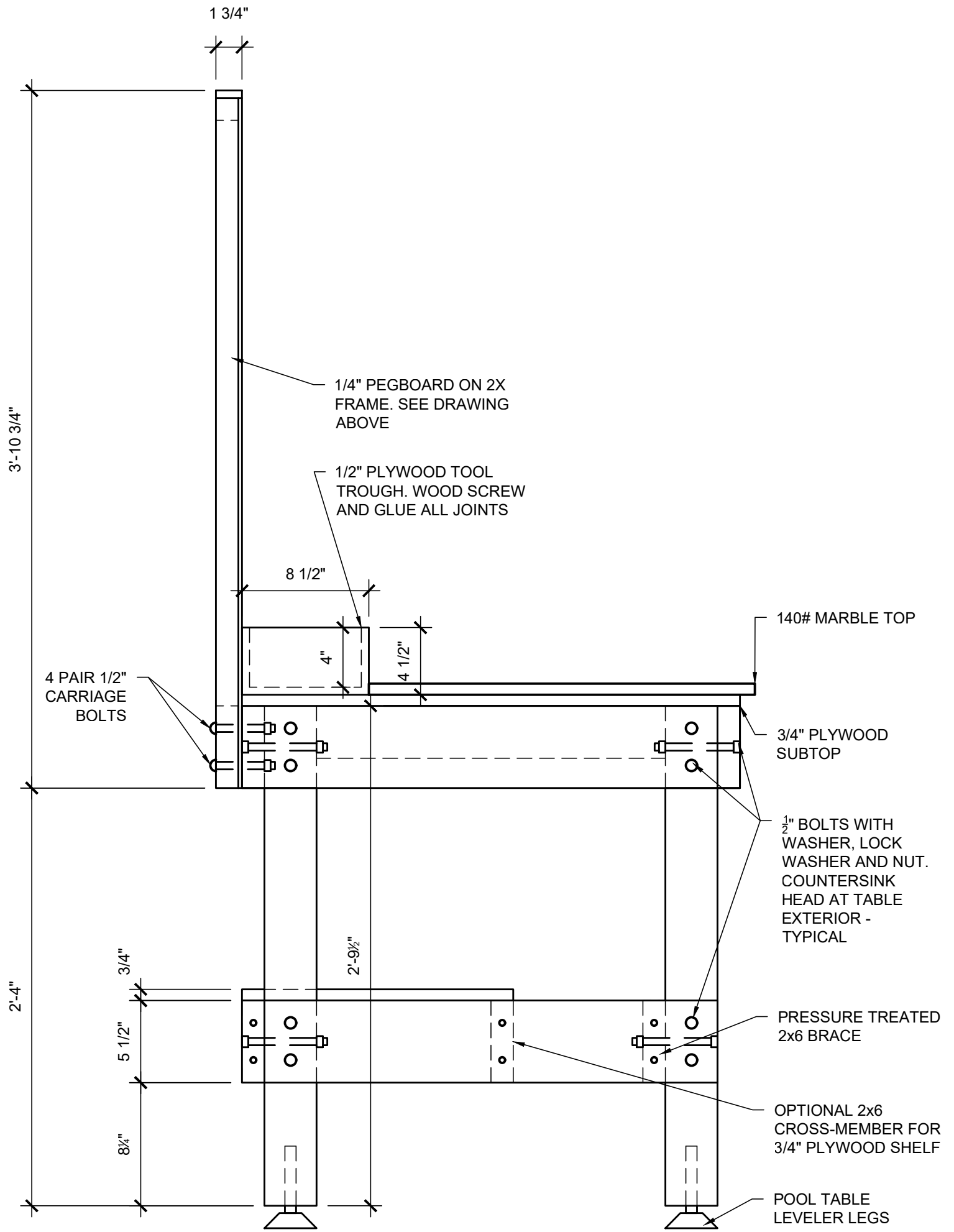


4 FRAMING @ BACKBOARD
1 1/2" = 1'-0"

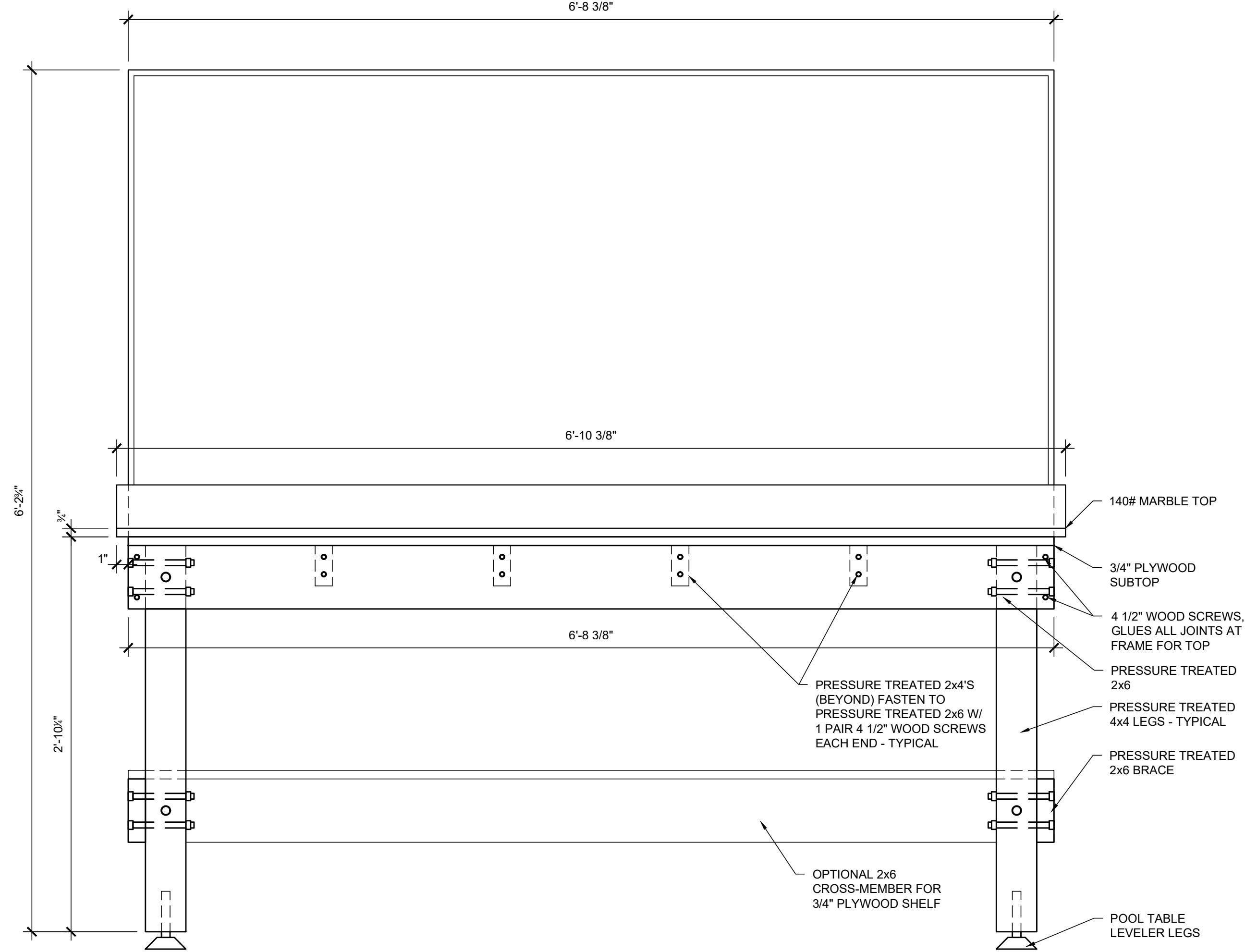


2 PLAN VIEW
1 1/2" = 1'-0"



3 SIDE VIEW
1 1/2" = 1'-0"

REQUIRED MATERIALS		
MATERIAL	QUANTITY	NOTES
1x3s	2	
2x2s	4 @ 96"	
2x4s	3 @ 96"	
2x6s	7 @ 96"	
4x4s	2 @ 96"	
1/2" PLYWOOD	1 SHEET 4x8	
3/4" PLYWOOD	2 SHEETS 4x8	
1/4" PEGBOARD	1 SHEET 4x8	
4 1/2" WOOD SCREWS	40	
1" WOOD SCREW	16	
1/2" x 6" GALVANIZED BOLTS	24	
1/2"x6" GALVANIZED CARRIAGE BOLTS	8	
WASHERS	32	
LOCKWASHERS	24	
LOCK NUTS	32	
3"x3"x1" GALVANIZED 90° BRACKET	20	
1" x 4" GALVANIZED FLAT BRACKET	4	
MARBLE TOP	15 SQUARE FOOT	
POOL TABLE LEVELER LEGS	4	
LIQUID NAIL	1 TUBE	
WOOD GLUE	NA	



1 FRONT VIEW
1 1/2" = 1'-0"

ASSEMBLY INSTRUCTIONS

- CUT 2x6 FRAME MEMBERS TO SIZE, LOCATE AND PRE-DRILL ALL BOLT AND SCREW HOLES IN THE PERIMETER FRAME. DRY FIT FRAME AND CHECK SIZE. USE TEMPORARY BLOCKING TO SQUARE AND HOLD TOGETHER.
- CUT 2x4'S TO LENGTH, DRYFIT IN FRAME AND PREDRILL SCREW HOLES.
- ONCE ANY ADJUSTMENTS ARE MADE GLUE AND SCREW ALL JOINTS. CLAMP AND ALLOW GLUE TO SET OVERNIGHT.
- MEASURE AND CUT 3/4" PLYWOOD SUBTOP. MEASURE CENTER CUTOFF PER DIMENSIONS AND CAREFULLY REMOVE. FASTEN OUTER SUBTOP TO FRAMING WITH 1 1/2" WOOD SCREWS AT 12" O.C. AT ALL FRAMING MEMBERS.
- CUT LEGS TO LENGTH AND PREDRILL FOR LEVELER FEET AND THRU BOLT CONNECTION AT FRAME AND BRACE. DRYFIT ALL 4 LEGS AT FRAME. CHECK FOR LEVEL AND PLUMB. SHIM AS REQUIRED. (DO NOT GLUE LEGS TO FRAME)
- INSTALL THRU BOLTS AT FRAME AND BRACE CHECKING FOR PLUMB AND LEVEL AS YOU GO. ONCE THIS STEP IS COMPLETE THE TABLE BASE WITH SUBTOP IS COMPLETE, IT SHOULD BE LEVEL AND PLUMB BEFORE PROCEEDING.
- INSTALL LEVELER FEET.
- ADHERE 3/4" SUBTOP CENTER TO BOTTOM OF MARBLE TOP WITH LIQUID NAIL MARBLE AND GRANITE ADHESIVE. VERIFY OVERHANG IS CORRECT AND ADJUST AS REQUIRED. CLAMP SUBTOP CENTER MARBLE WHILE GLUE SETS. TO INSTALL THE MARBLE TOP SIMPLY SET IT IN PLACE AND SCREW ATTACHED FASTENERS TO BOTTOM PER DIAGRAM.
- CUT PEGBOARD FRAME MEMBERS TO SIZE AS SHOWN. PREDRILL AND DRYFIT. NOTE: FINAL SIZE ACCOUNTS FOR 1X TRIM PIECE AT PERIMETER TO PROTECT PEGBOARD EDGE. GLUE AND SCREW TRIM PIECE TO FRAME AFTER INSTALLATION OF PEGBOARD.
- SQUARE FRAME, INSTALL ANGLE BRACKETS AT INSIDE CORNERS OF FRAMING MEMBERS. GLUE AND SCREW ALL JOINTS, CLAMP AND ALLOW GLUE TO SET OVERNIGHT.
- FIT PEGBOARD TO FRAME AND CUT TO SIZE. FASTEN WITH 1" WOOD SCREWS AT 18" O.C. AT PERIMETER AND INTERMEDIATE 2X2'S (DO NOT GLUE PEGBOARD TO FRAME).
- INSTALL 1X TRIM AT 3 SIDES OF PEGBOARD FRAME, FASTEN WITH 1" WOOD SCREWS AT 12" O.C. (DO NOT GLUE TRIM TO FRAME).
- ALIGN HOLES IN PEGBOARD FRAME WITH TABLE. DRILL HOLES FOR THRU BOLTS AND MOUNT TO TABLE WITH 1/2" CARRIAGE BOLTS AS SHOWN.
- MEASURE REMAINING AREA BETWEEN MARBLE TOP AND PEGBOARD BACK FOR TOOL TROUGH. CUT 1/2" PLYWOOD FRONT, SIDES AND BOTTOM TO FIT. DRY FIT TO ASSURE CORRECT SIZING.
- ASSEMBLE TROUGH WITH 1" WOOD SCREWS @ 12" O.C., GLUE AND SCREW ALL JOINTS, CLAMP AND ALLOW GLUE TO SET OVERNIGHT.
- INSTALL TROUGH AND SECURE WITH (4) 1" WOOD SCREWS TO TABLE FRAME.